



GB

JRB5064

NOTE

Secure vehicle against rolling away.

Ensure proper cleanliness when working on the servo-steering.

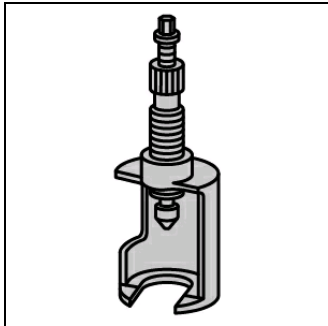
Cable connections must be cleaned before removing.

Use only fibre-free cleaning cloths.

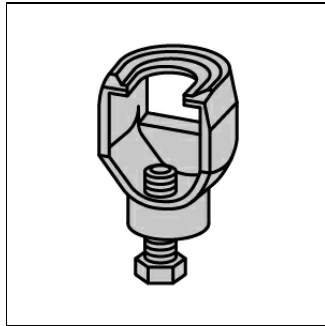
The hydraulic oil level must not drop below the minimum during bleeding.

The illustrations of these installation instructions are exemplary and are only intended for better understanding.

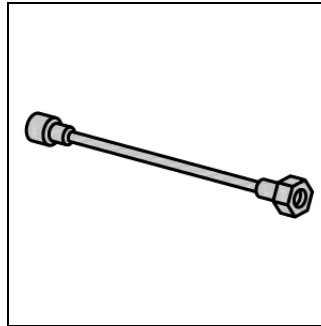
Required special tools



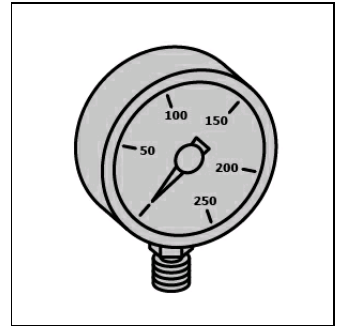
Ball-joint puller
OE (655 589 00 35 00)



Puller
OE (625 589 00 35 00)



Hose
OE (437 589 00 90 00)



Pressure gauge
OE (437 589 00 21 00)

Required filling quantities/torques

Filling quantities and specifications

Power steering oil	0,00 litres
Power steering oil specification	Observe manufacturer's specifications.

Required torques

Self-locking screws and nuts must always be replaced.

Steering rod (2)	(see figure 1) Use new nut(s)	Observe the vehicle manufacturers' instructions (expansion bolts, securing material).
Steering column switch (1)	(see figure 3) Use new nut(s)	Observe the vehicle manufacturers' instructions (expansion bolts, securing material).
Pressure line at steering gear		Observe the vehicle manufacturers' instructions (expansion bolts, securing material).
Return line to steering gear		Observe the vehicle manufacturers' instructions (expansion bolts, securing material).
Steering gear		Observe the vehicle manufacturers' instructions (expansion bolts, securing material).

Remove:

Tilt driver's cab.

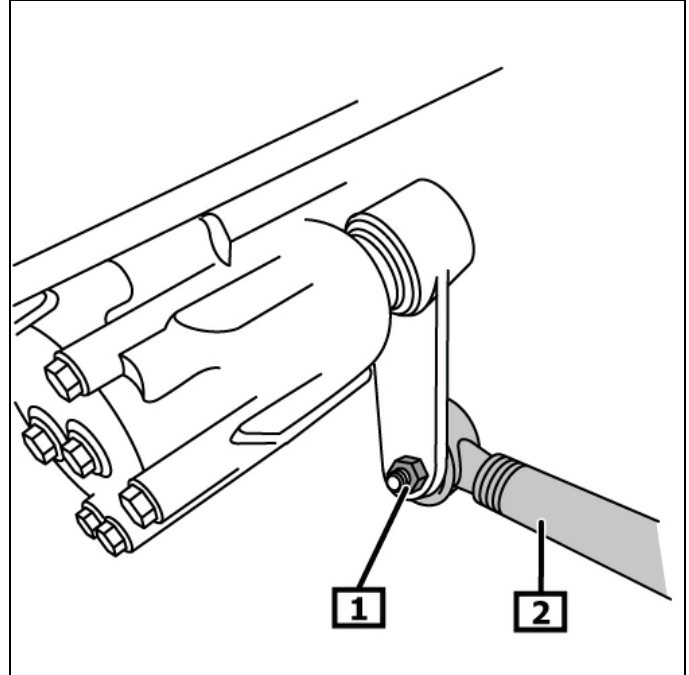
Remove fender front lh.

Nut - loosen steering track rod end. **(1)**
Pull off the steering rod head using a puller. **(2)**

Required special tools

Puller **OE (625 589 00 35 00)**
(see figure 1)

Figure 1



1 Steering rod head nut

2 Steering rod

Nut - loosen steering track rod end. **(1)**
Pull off the steering rod head using a puller. **(2)**

Required special tools

Ball-joint puller **(2) OE (655 589 00 35 00)**
(see figure 2)

Remove steering spindle at the bottom.

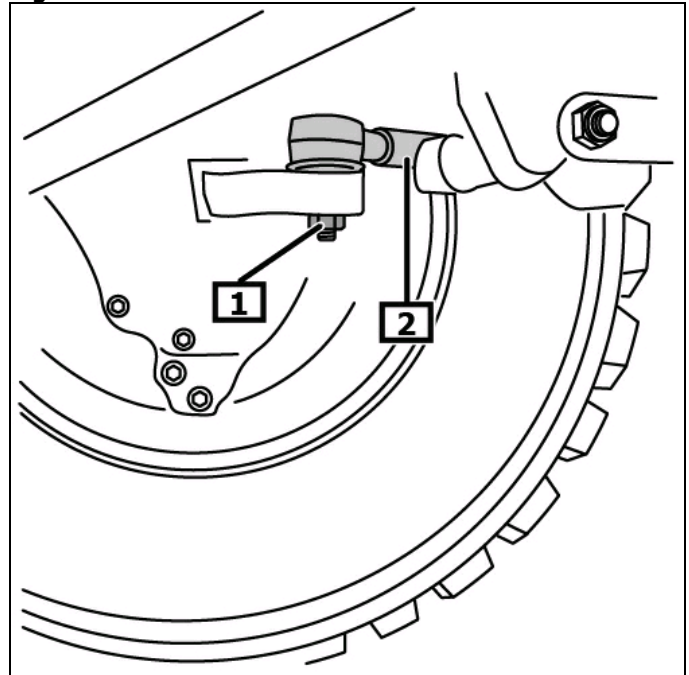
Disconnect hydraulic line(s) from steering gear.

Collect draining fluid.

Close opening(s).

Support steering gear using suitable garage trolley jack.
Remove steering gear.

Figure 2



1 Steering rod head nut

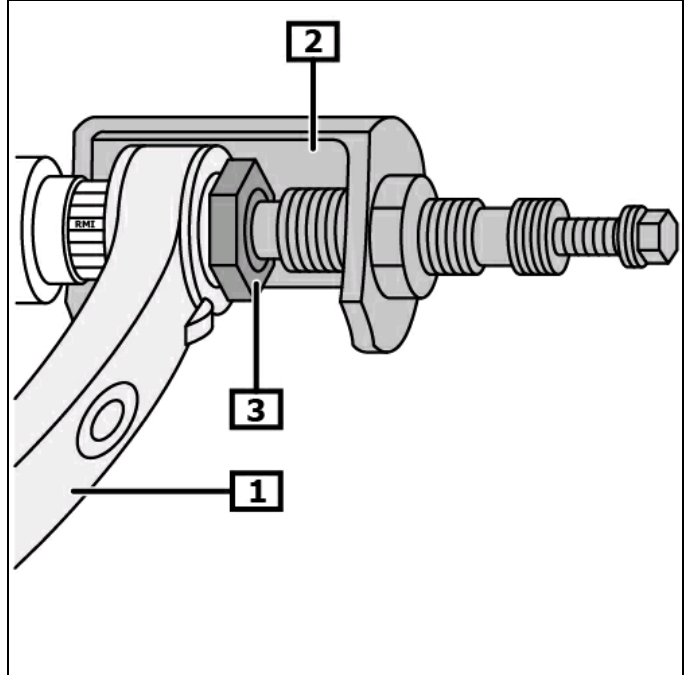
2 Steering rod

Loosen steering arm lever nut. (3)
Remove the steering arm lever from the steering gear using a puller. (1)(2)
Unscrew the steering arm lever nut(s). (3)
Remove steering column control stalk. (1)

Required special tools

Ball-joint puller (2) OE (655 589 00 35 00)
(see figure 3)

Figure 3



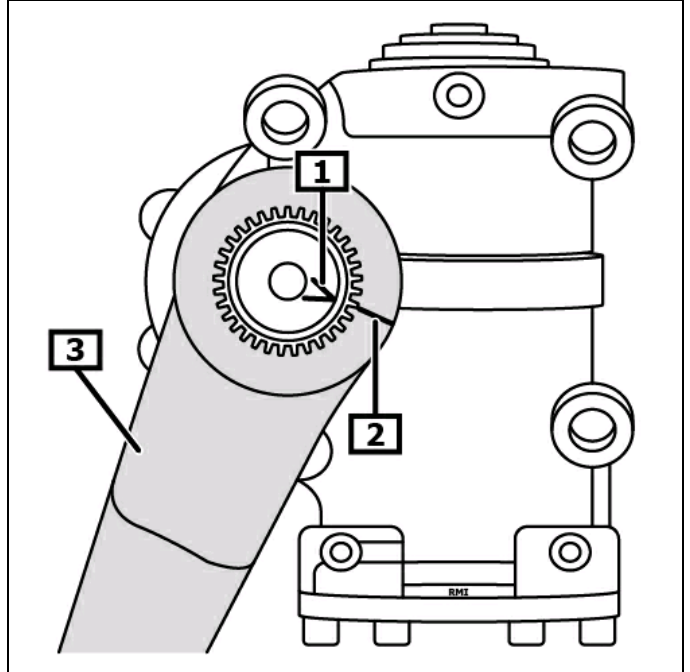
- 1 Steering column switch
- 2 Ball-joint puller
- 3 Steering arm lever nut(s).

Install:

Install steering column control stalk. (3)
Markings must align. (1)(2)
(see figure 4)

Continue assembly in reverse order of removal.

Figure 4



- 1 Mark(s)
- 2 Mark(s)
- 3 Steering column switch

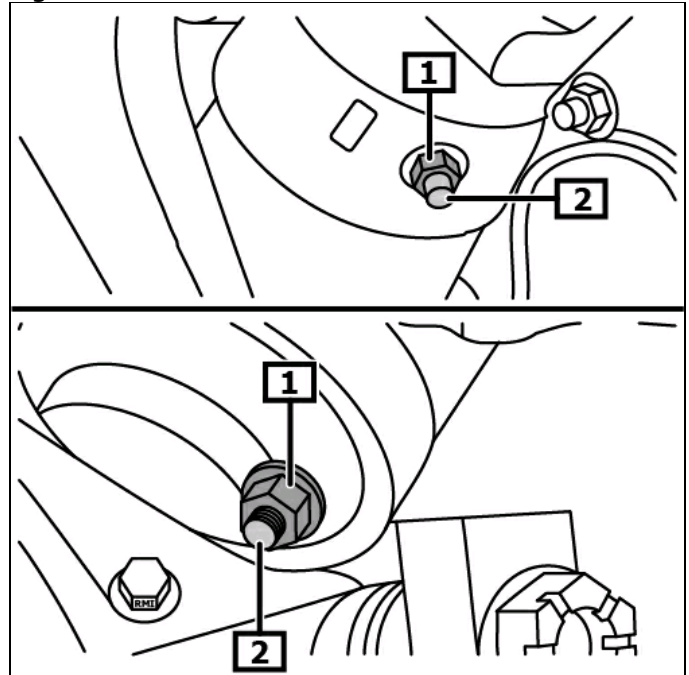
Bleed steering system

Lift the vehicle until the front wheels are off the ground.
Turn the steering wheel to the right up to the stop.
Check power steering oil level and correct if required.
Turn steering wheel 12 times from stop to stop.
Check power steering oil level and correct if required.
Turn the steering wheel to the central position.

Unscrew lock nut(s). **(1)**
Screw in adjusting screw(s) up to the stop. **(2)**
Tighten lock nut(s). **(1)**
(see figure 5)

Turn steering approx. 8 times all the way to the left.
Let engine run until no more air bubbles rise in the hydraulic fluid reservoir tank.
Switch off engine.

Figure 5



1 Lock nut

2 Adjusting screw

Check the final pressure limit.

Remove dust cover(s).
Connect hose.
Connect the pressure gauge.

Required special tools

Hose **OE (437 589 00 90 00)**

Pressure gauge **OE (437 589 00 21 00)**

Start engine and run with idling speed at approx. 1400 - 1500 rpm.
Turn steering wheel several times back and forth to the limit positions until power steering oil temperature has reached approx. 50 °C.
Turn the steering wheel to the left up to the stop.
Read and note pressure on the pressure gage.
Turn the steering wheel to the right up to the stop.
Read and note pressure on the pressure gage.
Turn the steering wheel to the central position.
Switch off engine.

The final limiting pressure must be 40 - 50 bar.

The final limiting pressure must be adjusted if it is out of tolerance.

Set final limiting pressure

Unscrew lock nut(s). **(1)**

Screw in adjusting screw(s) up to the stop. **(2)**

Unscrew adjusting screw by 6 turns. **(2)**

Tighten lock nut(s). **(1)**

Start engine and run with idling speed at approx. 1400 - 1500 rpm.

Turn the steering wheel to the left up to the stop.

Read and note pressure on the pressure gage.

If final limiting pressure should be out of tolerance, screw adjusting screw by 1/4 turns in or out and check pressure again. **(2)**

Tighten lock nut(s). **(1)**

Turn the steering wheel to the right up to the stop.

Read and note pressure on the pressure gage.

If final limiting pressure should be out of tolerance, screw adjusting screw by 1/4 turns in or out and check pressure again. **(2)**

Tighten lock nut(s). **(1)**

(see figure 5)

Switch off engine.

Remove special tools.

Check power steering oil level and correct if required.

Carry out a test drive.

Check steering components for tightness.