



Hydraulic throw out bearing kit  
Art.Nr. K70428-01 (SB60225 / Shim210)

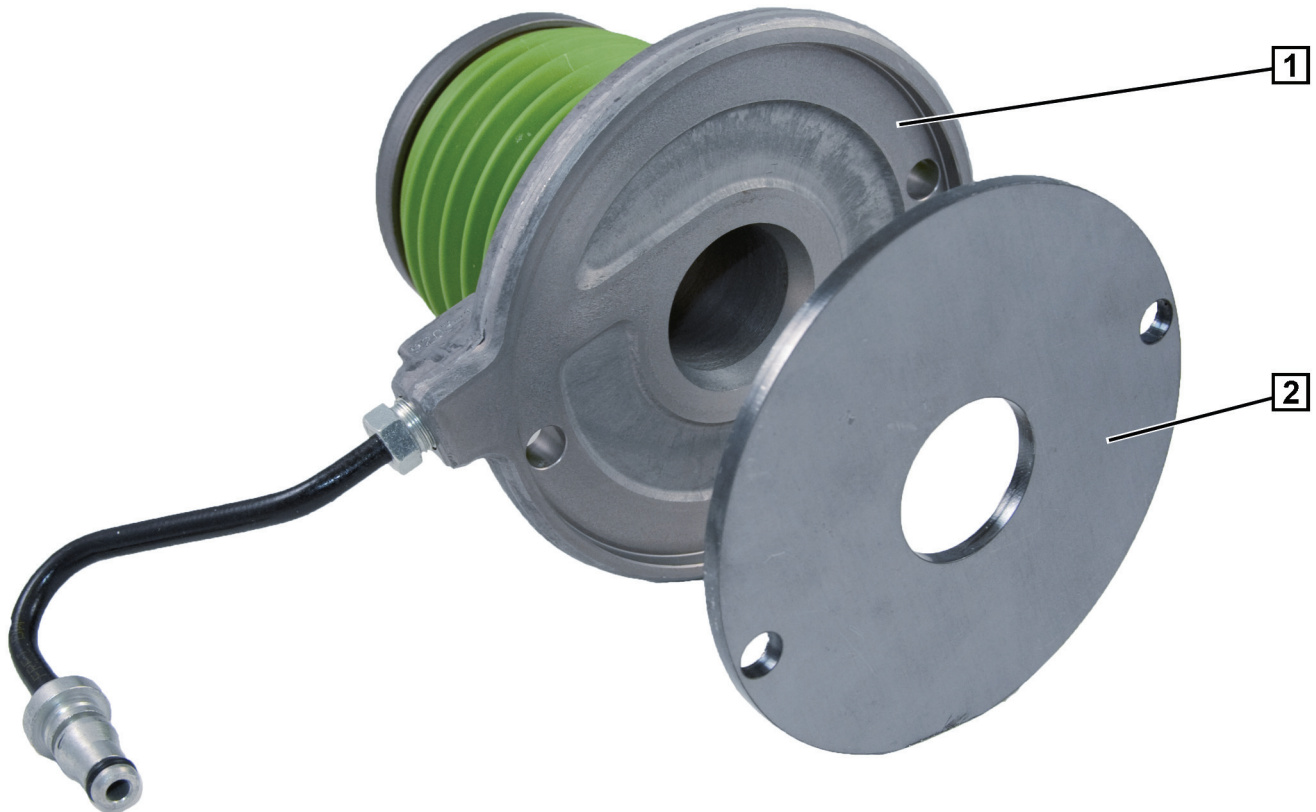


Fig. 1: Hydraulic throw out bearing with shim

The SACHS hydraulic throw out bearing kit comes with a shim that must be used in order to maintain original equipment (OE) operation.

- Remove the two M10 bolts.
- Remove the plastic clip that holds the hydraulic line connector inside the transmission bell housing.
- Remove the throw out bearing (1).
- Place the shim (2) behind the SACHS throw out bearing (1).
- Mount the SACHS throw out bearing (1).
- Mount the two M10 bolts.
- Torque the bolts to 8 ft.lbs.



### NOTE

You must bleed the hydraulic system for proper operation.  
Please refer to the original equipment (OE) manual for the detailed procedure.