

Fig. 1: Example

- |   |                              |   |                  |
|---|------------------------------|---|------------------|
| 1 | Air filter, coarse           | 2 | Air filter, fine |
| 3 | ConAct clutch release system |   |                  |



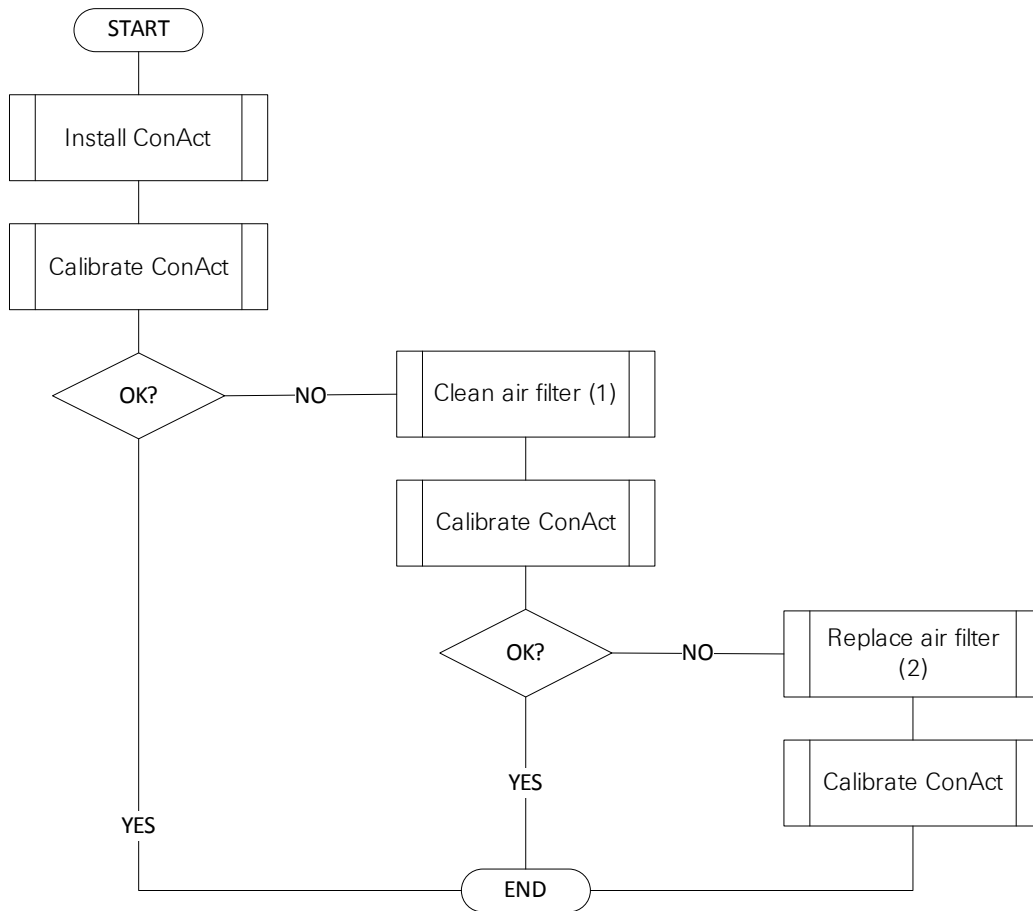
Regardless of the vehicle manufacturer, the ConAct clutch release system (3) must be calibrated with a suitable diagnostic unit (e.g. diagnostic products from TEXA [www.texa.com/solutions/truck](http://www.texa.com/solutions/truck)) after the installation.  
Observe the vehicle manufacturer specifications.

If the ConAct clutch release system (3) is not calibrated after the installation, the following errors may occur:

- Error message in display.
- Clutch grabs when setting off.
- Vehicle is poorly maneuverable when loaded.

If it is not possible to calibrate the ConAct clutch release system (3), it may be due to one of the following reasons:

- Vehicle has insufficient compressed air supply.
- Air pressure in clutch release system is too low: air filter, coarse (1) or air filter, fine (2) are clogged.
- Vehicle software: version not up to date.



[www.aftermarket.zf.com/serviceinformation](http://www.aftermarket.zf.com/serviceinformation)