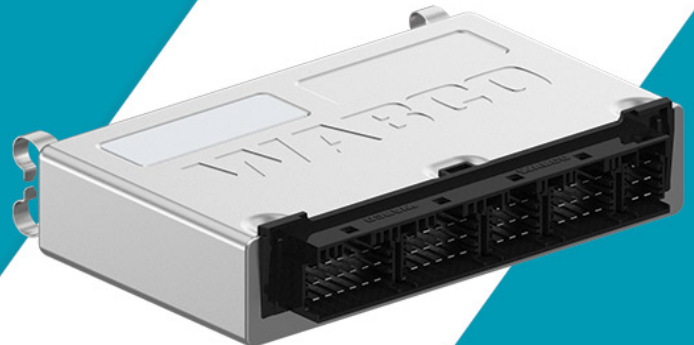




RANGE EXTENSION



EBS Electronic Control Unit

WABCO's Electronic Braking Systems (EBS) are controlled and monitored by an Electronic Central Component (ECU) which directs electrical signals to the appropriate electronic braking system components to improve efficiency.

Features

- One central ECU for more efficient and responsive vehicle performance
- Diagnostic functionalities constantly monitor performance and alerts any problems
- Gateway between 5 CAN data buses prevents overloading of lower speed networks within vehicle ECU control
- Exclusive for Daimler applications

Customer value

- Software upgrades can be performed in the field reducing vehicle downtime
- Manages the signals from two pneumatic and one electronic circuit for highly reliable braking performance
- Controls more than 40 functions to improve vehicle efficiency
- The Electronic Control units are supported by ZF Pro Diagnostic suites, and the exchange and installation of the part can be do through the "teach in" process.
- Please note, the spare parts are also supported by the OEM diagnostic software

Application

The extensive range is available for Daimler & Evobus.

Follow the installation steps from diagnostic tool. It is the same installation process as for OEM devices.



WABCO product number	Manufacturer	OE Cross-reference
4461392230	DAIMLER	A0014463236 A0014462436 A0014462736
4461392200	DAIMLER	A0014460936
4461392130	DAIMLER	A0014461036 A0004469936 A0004468036 A0004468736 A0004469036 A0004469836 A0014460536

Find out more

Legal disclaimer: The ZF Friedrichshafen AG products described above are specially designed for their specified intended use and may not be used for any other purpose. However, ZF makes neither an explicit nor an implied guarantee for the suitability of the products for certain intended uses neither explicitly agreed nor agreed in writing between ZF and its customers. The details in this flyer are, in particular, not binding with regard to the nature of the products. Only those written agreements made in the ordering process, in particular those concerning the nature of each product, shall be decisive in terms of ZF's contractual obligations. Proper assembly of the products is also a prerequisite for this guarantee. Details in advertising material are non-binding and cannot be consulted in determining the nature of the products. Subject to change without notice. Errors and omissions excepted. For further information visit: www.zf.com/dis